

Peninsula Primary

Newsletter No. 4 28 March 2011

Greetings, Tena Koutou e hoa ma, hello parents and friends of the school, talofa lava, malo e lelei, fakalofa lahi atu.....

Our focus of study for Term 1 is: **Celebration of Culture**

Enduring understanding:

1. Culture is defined by a shared set of attitudes, values, goals and practice.
2. We need to understand and respect all cultures.

Essential questions:

1. What do we mean by culture?
2. What determines and influences culture

One of the strands of teacher professional development this year is aimed at reviewing how we meet the needs of our more able learners. Recently, Elaine Le Sueur, from Gifted Education Services, was available to parents to talk about Gifted and Talented education. During this discussion it became clear that some of the things we do to benefit gifted and talented students may not be publicized enough. For example: With the introduction of our Kiwisport facilitator we have been fortunate to be able to run sports academies in the Junior, Middle and Senior areas. This allows us to meet the needs of gifted and talented students in the area of sport and PE. The children are nominated by the teachers as students that are showing more developed skills or abilities in the sport or PE areas. Numbers are kept to a manageable level for our facilitator to offer quality curriculum delivery.

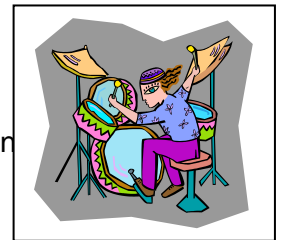
The students attend the group once a week and are given opportunities to further develop and excel in this area of expertise for them. Each term is planned around a different focus so the composition of the academies may change slightly each term. We are just about to complete our term on athletics and this will be followed by a focus on Invasion games – games or sports that require one team to invade another's area in order to win the game. e.g soccer, netball, rugby. More examples will follow in future newsletters.

TWILIGHT GALA THURSDAY 31 MARCH 5.30PM – 8.00PM.....

Come along for a fun filled fundraising day of face painting, bouncy castle, coconut shy, sponge bob game, sausage sizzle, cake stall, basketball hoop, fishing game and lots more games for the kids, food and performances.

The programme of entertainment will be something like:

- 1) Kapa Haka group
- 2) Teachers Group
- 3) Bryan Holden Accordion
- 4) Lynne Flaming Mandolin
- 5) P.P.S.Pasifika Group
- 6) P.P.S. ex-pupils rock band 'Torrential'.



M.C. will be Chris Larking who will also play keyboard. Lynne, Bryan and Chris are West Auckland Musicians offering their support to us free of charge. A fantastic gesture. We appreciate it.

Other generous acts in support of Peninsula Primary:

Five staff members from **BNZ Head Office** came to our school to give us their labour free for a day. They worked tremendously hard painting the fence behind the junior block, the area by the pool entrance, and various other sections of the fence (until they ran out of paint). Several classes will now prepare to complete murals using the freshly painted areas as background. The bank staff were a pleasure to work with and their work rate was exemplary. We appreciate the donation of their time and effort.

Monier Brick New Lynn have kindly donated 450 edging pavers. This will enable us to complete the edge of the "Octopus path" in the garden behind the junior block. This will be a major step meaning the garden is marked out and ready for filling with soil and plants. We appreciate the generosity of Monier and its employees in providing this resource for the benefit of current and future parents.

Return slip

I have received and read Newsletter No. 4 Childs Name.....Room.....

SignedParent/Guardian

SCHOOL PHOTOS WEDNESDAY 11 MAY...

School photos will be taken on Wednesday 11 May. If you wish to purchase photos please complete the envelope sent home with this newsletter and return it to school no later than Friday 6th May with the correct money inside the envelope. We do not open the envelopes so are unable to give you change. This is a prepaid system and unless payment is in the correct envelope, photos will not be ordered. Photos are only for children attending this school. Please note:

- Use the envelope with child's name on.
- Do not enclose one envelope inside another.
- You may pay for more than one child's photo on one cheque, as long as each child has an envelope completed.
- If you have more than one child at school you may have them photographed together. Please see the office for a sibling envelope.
- PLEASE MAKE CHEQUES OUT TO PHOTOLIFE STUDIOS.

Parent Reading

At the beginning of next term we will be running our Parent Reading programme again, and we are looking for parents who would be able to help with this. It involves listening to children read on a regular basis. The programme operates every Tuesday, Wednesday and Thursday, from 9.00 am until 10.15am.

If you are able to assist on one of these days, please contact Leonie Blackburn or leave a message at the office. We would be very pleased to see you. The progress the children make with their reading by being involved with this programme is very encouraging.

If you are able to help you will receive a letter home telling you the time of starting and inviting you to a morning tea where you will meet other parents involved and receive further information about the programme.

The BNZ helpers



Dates to remember.....

March 29	Athletics Field Day
March 31	Twilight Gala 5.30 – 8.00 pm
April 15	Last day Term 1
May 2	First day Term 2
May 11	School photos taken

Enviroschool News

On Saturday the 19th of March Peninsula Primary had a stall at the Family Fun day. We made Zucchini and Feta Fritters with some of the Nature Crusaders. The Nature Crusaders did a wonderful job. They behaved like the role models that they are and promoted our school well to all passers-by. They also made wonderful fritters. So a special thank you to the Nature Crusaders and the teachers that helped out. If you tried our fritters and want the recipe, we have put it up on our website.

Come and check out our stall at the Gala this Thursday. We will be selling seeds and worm tea fertiliser. Also Mrs Barton will be selling soup made by the talented year 5 and 6 cooks from our Garden to Table programme.

Peninsula Primary School is in an article in the Your Home and Garden Magazine, April 2011 issue. There will be a copy in the library and at the office if you want to check it out.

Te Atatu Family Fun Day 2011 Enviroschools staff

